



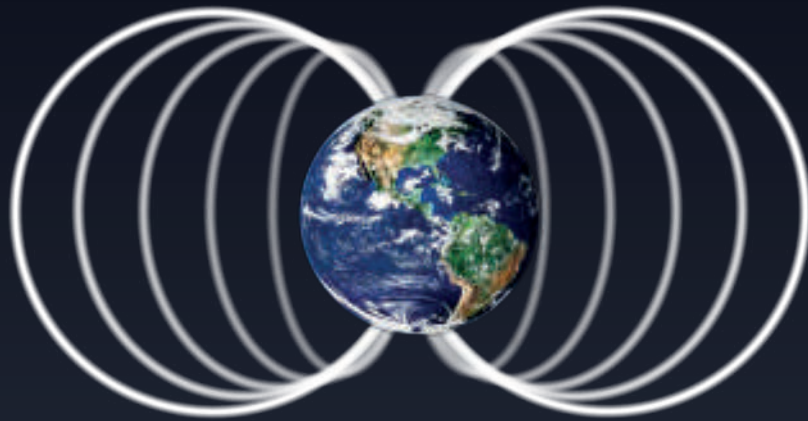
iMRS
PRIME

**The world`s only 6-dimensional
PEMF Therapy System!**

Time to rethink Health and Wellness!

Electromagnetism

Known as the elemental force of life, electromagnetic waves are not only essential for our entire ecosystem, they are furthermore vital and crucial for our individual health and well-being. Electromagnetic waves, constantly exposed by the Earth, the Sun, the Schumann Resonances, (ionospheric waves) as well as spherics, plus the harmonic composition of all, create an all-natural force with which human organisms, animals and even plants interact actively in order to preserve and restore their biological health.



ElectroSmog

Due to the global impact of artificial electromagnetic interference, mainly caused by cellphone networks (3G, 4G and now 5G), further wireless technologies (WIFI, Bluetooth, Satellites), all kinds of electrically powered objects, such as computers, laptops, smart phones etc., density of buildings, lack of movement and exercise, stress, poor and depleted diets and not to forget about the ever-increasing pollution in our environment, the entire system drastically lost it's balance resulting in deficiencies, disturbance and unspecific symptoms and disorders.

PEMF – The Essence!

The new iMRS prime technology combines the findings and efficiency of encompassing, basic PEMF research with the unique capability of providing the essence of all natural electromagnetic waves in one system for home use.





the new benchmark of holistic, low-pulsed electro-magnetic technology for your personal wellbeing!

The control panel



- Housing and pedestal in brushed aluminum, ROHS/REACH/IP20.
- 10.2" capacitive touch screen LCD-Display.
- 2 earphone jacks (3.5).
- 2 USB jacks.
- One-Cord connection (20-pin) to Conectorbox.
- LED-Power indication.
- 2 built-in speakers.
- NFC sensor.





The connector box



- ◆ Designed as the gateway between the iMRS prime control unit and the applicators/accessories.
- ◆ Built-in microprocessor with multidirectional signaling.
- ◆ 6 applicator jacks.
- ◆ 2 Sensor jacks.
- ◆ 2 USB jacks.
- ◆ 2 integrated D/A-Converter allowing for two separate, individual applications with only 1 control unit.
- ◆ Brushed aluminum housing for effective heat dissipation, ROHS/REACH/ IP20.



The applicators

Experience “” – the latest generation of our high-end applicators. Every PEMF applicator serves as the conductor of the exposed signal patterns to the receiver and is therefore the most critical component. The brand new  applicator family combines all vital properties of applied PEMF technology in one solution.

- The selected outer material is in compliance with DIN EN ISO 10993!
- The entire construction is designed to last for years – even with multiple, daily applications!
- The honeycomb structure of the fabric surface is breathable, prevents sweating and contamination and is easy to clean!
- The built-in copper coils are rock-solid and non-insulated to create the highest physical efficiency of the applied pulsed electromagnetic field!
- The newly designed and engineered “Optical Function Control OFC” guarantees constant monitoring of the functionality of each applicator and indicates malfunctioning with a red LED! It even displays the pre-programmed pole shifts with different colors (Blue and Green) during an application!
- Every Exagon applicator has built-in USB-intelligence in order to ensure bilateral communication with the main processor of the iMRS prime control panel!





The whole body applicator for the “holistic” PEMF therapy!



- ◆ 6 built-in, rock-solid copper coils, divided in three pairs with different amount of windings to control the applied field intensity over the entire surface.
- ◆ Triple Sawtooth waveform for highest efficiency of low-pulsed PEMF.
- ◆ Foldable in 3 segments.
- ◆ Built-In Optical Function Control OFC.
- ◆ Medical-Grade Click-Plug.



The local applicator to treat specific body areas!



- ◆ 2 built-in, rock-solid copper coils to evenly control the applied field intensity over the entire surface.
- ◆ Square Wave for highest efficiency of locally applied PEMF.
- ◆ Built-In Optical Function Control OFC.
- ◆ Medical-Grade Click-Plug.



The punctual applicator
to treat specific
body areas!



- ◆ Newly designed and flexible applicator for punctual usage and to utilize the so-called “Helmholtz-Effect”!
- ◆ 1 built-in, rock-solid copper coil in each segment (2 in total) to flexibly control the applied field intensity over the particular surface.
- ◆ Square Wave for highest efficiency of locally applied PEMF with Helmholtz-Effect.
- ◆ Built-In Optical Function Control OFC.
- ◆ Medical-Grade Click-Plug.




The world’s first
and only flexible
hybrid applicator!



Exagon FIR represents the most advanced, holistic PEMF applicator-technology to date. It is equipped with an additional, insulated layer of a specific carbon fiber wire pattern! The wire structure is controlled by the iMRS prime operating panel to create the defined exposure and temperature of the desired far infrared wavelengths (roughly between 3 and 14 Microns). Exagon FIR technology together with the iMRS prime opens a complete new horizon in the combined application of low-pulsed electromagnetic waves (PEMF and Far Infrared FIR simultaneously) and the personal experience is truly one of a kind:

It literally feels like floating on a raft on a calm lake!

A close-up photograph of a woman with dark hair wearing a grey and black Exagon Brain goggle. The goggle has the 'EXAGON' logo on the side. She is looking upwards and to the right.

Brainwave Entrainment - Holistic therapy for the human brain!

- ◆ Newly designed Goggles with 12 built-in LEDs on each side. Housing is completely darkened for optimal performance.
- ◆ Photic, chromatic and audible BrainWave Entrainment combined in one single system.
- ◆ Elastic band for easy adjustment.
- ◆ USB-Plug.

3-Dimensional Brainwave Entrainment

Photic Stimulation ...

... uses constant, repetitive light pulses to entrain the brain. Delivered by: television or computer screens, strobe lights, LED eye sets, virtual reality goggles. Visual entrainment is more effective than audio entrainment, because the visual cortex is larger than the auditory cortex. When the visual cortex becomes entrained, it affects a greater portion of the brain.



Audio Entrainment

The deliberate use of sound to modify the mind has been chronicled throughout history (Aboriginal didgeridoo, Tibetan singing bowl, Native American flute, Tribal drum), used as powerful tools of transformation. Modern neuroscientists found audio entrainment to bring about these same binaural beats and tones, induce super learning, memory improvement, creativity.

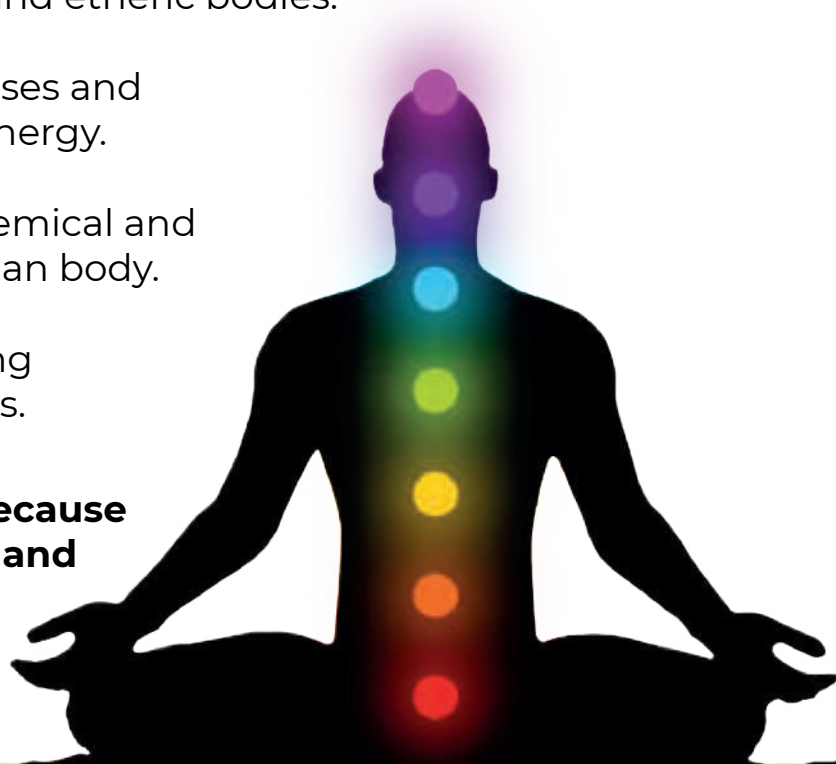


Chromotherapy

Visible color spectrum composed of reds, greens, blues and their combined derivatives.

- ◆ Light affects both the physical and etheric bodies.
- ◆ Colors generate electrical impulses and magnetic currents or fields of energy.
- ◆ They are activators of the biochemical and hormonal processes in the human body.
- ◆ Many natural therapists are using chromotherapy on their patients.

Colors influence us differently, because they have different wavelengths and frequencies, and affect different parts of the brain.





Biofeedback technology

Monitoring - Analyses - Evaluation

- ◆ Bifunctional photoplethysmography sensor, medical-grade.
- ◆ Designed to detect blood volume changes in the microvascular bed of tissue.
- ◆ SpO2 and HRV evaluation.
- ◆ Dynamic intensity adjustment during a PEMF application.
- ◆ Medical-Grade Click-Plug.

Evaluate Yourself!



HRV – Heart Rate Variability

Heart rate variability (HRV) is an accurate method to assess autonomic nervous system function. Thus, HRV analysis is widely used in different applications including (but not limited to) health science research, stress and wellbeing (including occupational stress) studies, and exercise and recovery monitoring.

Heart Rate (HR) is the number of heartbeats per minute. Heart Rate Variability (HRV) is the fluctuation in the time intervals between adjacent heartbeats. HRV concerned with analyzing the intervals between heart beats, which are called inter-beat intervals (IBIs). Exagon Sense is constantly recording and calculating the HRV scores of the user during a PEMF application = evaluation of the autonomic nervous system!



SpO2

... stands for peripheral capillary oxygen saturation, an estimate of the amount of oxygen in the blood. More specifically, it is the percentage of oxygenated haemoglobin (haemoglobin containing oxygen) compared to the total amount of haemoglobin in the blood (oxygenated and non-oxygenated haemoglobin).

If a pulse ox measured your blood oxygen level (SpO2), a normal reading is typically between 95 and 100 percent. A below-normal blood oxygen level is called hypoxemia. Hypoxemia is often cause for concern. The lower the oxygen level, the more severe the hypoxemia. This can lead to complications in body tissue and organs. The optional available "Exagon Sense" of the iMRS prime is capable of indicating the SpO2 value during an application using a so-called photoplethysmographic sensor.

Monitor Yourself!

iMRS prime together with Exagon Sense dynamically regulates the applied field intensity subject to the variation of the user's HRV during the application. In addition, the iMRS prime is recording the data. The application files can be downloaded and utilized for further analyzes.



Analyze Yourself!

Kubios HRV software is the gold standard in heart rate variability analysis software for scientific research and professional use. Kubios HRV Standard is a freeware HRV analysis software for non-commercial personal use. Kubios HRV is developed by an experienced team of medical physicists from Kuopio, Finland. The first version of Kubios HRV was released in 2004 and the software has been used in over 800 scientific studies by now. iMRS prime HRV data are 100% compatible with Kubios!

More info: www.kubios.com

Fast Start Programs (standard in all bundles)



The iMRS prime gets you going right away! All Fast Start Programs are designed for ease of use making holistic applications very simple and highly effective on a daily basis. All Fast Start Programs are automatically aligned and synchronized with the Exagon Brain, while connected and activated!



Performance



Regeneration



Relaxation



Sleep



Balance



Activation



Solfeggio Scale 9

Manual Mode



The basic application mode. Set all necessary parameters manually, based on the recommendation of your assigned Swissbionic LifeStyle Consultant!

Program Mode



The iMRS prime allows you to pre-program multiple users with all parameters and applicators and save them to the Control Panel storage drive.

Whenever the dedicated user wants to run an application, simply choose the dedicated applicator and the system will provide the default parameters!!

Split Mode



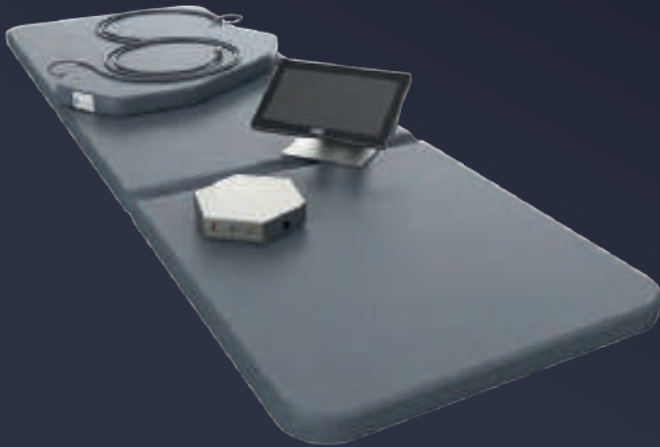
Two PEMF-Systems in ONE!

iMRS prime is the world's first PEMF-System allowing two stand-alone applications with only ONE control unit! The connector box of the iMRS prime provides 6 applicator plugs (3 on each side) and contains 2, equally powered D/A converters. The Split Mode divides the touchscreen into two operating surfaces allowing to set independent parameters and applicators for each session.

The perfect bundles for all needs!



iMRS prime Basic



iMRS prime Control Unit
iMRS prime Connector Box
Exagon Applicator Mat
Exagon Applicator Pad
20-PIN prime Connector Cable
Power Adapter
Software Tool: Manual Mode
Software Tool: Fast Start Programs

iMRS prime Advanced



iMRS prime Control Unit
iMRS prime Connector Box
Exagon Applicator Mat
Exagon Applicator Pad
Exagon Applicator Spot
20-PIN prime Connector Cable
Power Adapter
Software Tool: Manual Mode
Software Tool: Fast Start Programs
Software Tool: Program Mode

The perfect bundles for all needs!



iMRS prime Expert



iMRS prime Control Unit
iMRS prime Connector Box
Exagon Applicator Mat
Exagon Applicator Pad
Exagon Applicator Spot
20-PIN prime Connector Cable
Power Adapter
Software Tool: Manual Mode
Software Tool: Fast Start Programs
Software Tool: Program Mode
Software Tool: iGUIDE
Software Tool: Split Mode

iMRS prime Hybrid



iMRS prime Control Unit
iMRS prime Connector Box
Exagon Applicator FIR
Exagon Applicator Pad
Exagon Applicator Spot
20-PIN prime Connector Cable
Power Adapter
Software Tool: Manual Mode
Software Tool: Fast Start Programs
Software Tool: Program Mode
Software Tool: iGUIDE
Software Tool: Split Mode
Software Tool: Hybrid Mode

The perfect bundles for all needs!



iMRS prime Trial

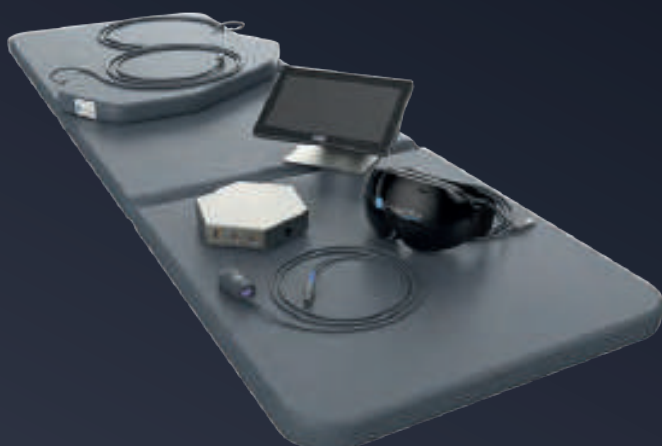


iMRS prime Control Unit
iMRS prime Connector Box
Exagon Applicator Mat
Exagon Applicator Pad
Exagon Applicator Spot
20-PIN prime Connector Cable
Power Adapter
Software Tool: Manual Mode
Software Tool: Fast Start Programs
Software Tool: Program Mode
Software Tool: iGUIDE
Software Tool: Split Mode
Software Tool: Hybrid Mode
Software Tool: Trial

iMRS prime SETs (including Exagon Brain and Exagon Sense)



iMRS prime Basic SET



iMRS prime Control Unit
iMRS prime Connector Box
Exagon Applicator Mat
Exagon Applicator Pad
20-PIN prime Connector Cable
Power Adapter
Exagon Brain
Exagon Sense
Software Tool: Manual Mode
Software Tool: Fast Start Programs

iMRS prime SETs

(including Exagon Brain and Exagon Sense)



iMRS prime Advanced SET



- iMRS prime Control Unit
- iMRS prime Connector Box
- Exagon Applicator Mat
- Exagon Applicator Pad
- Exagon Applicator Spot
- 20-PIN prime Connector Cable
- Power Adapter
- Exagon Brain
- Exagon Sense
- Software Tool: Manual Mode
- Software Tool: Fast Start Programs
- Software Tool: Program Mode

iMRS prime Expert SET



- iMRS prime Control Unit
- iMRS prime Connector Box
- Exagon Applicator Mat
- Exagon Applicator Pad
- Exagon Applicator Spot
- 20-PIN prime Connector Cable
- Power Adapter
- Exagon Brain
- Exagon Sense
- Software Tool: Manual Mode
- Software Tool: Fast Start Programs
- Software Tool: Program Mode
- Software Tool: iGUIDE
- Software Tool: Split Mode

iMRS prime SETs

(including Exagon Brain and Exagon Sense)



iMRS prime Hybrid SET



- iMRS prime Control Unit
- iMRS prime Connector Box
- Exagon Applicator FIR
- Exagon Applicator Pad
- Exagon Applicator Spot
- 20-PIN prime Connector Cable
- Power Adapter
- Exagon Brain
- Exagon Sense
- Software Tool: Manual Mode
- Software Tool: Fast Start Programs
- Software Tool: Program Mode
- Software Tool: iGUIDE
- Software Tool: Split Mode
- Software Tool: Hybrid Mode

iMRS prime Trial SET



- iMRS prime Control Unit
- iMRS prime Connector Box
- Exagon Applicator FIR
- Exagon Applicator Pad
- Exagon Applicator Spot
- 20-PIN prime Connector Cable
- Power Adapter
- Exagon Brain
- Exagon Sense
- Software Tool: Manual Mode
- Software Tool: Fast Start Programs
- Software Tool: Program Mode
- Software Tool: iGUIDE
- Software Tool: Split Mode
- Software Tool: Hybrid Mode
- Software Tool: Trial

Comparison Chart

	<i>iMRS</i> PRIME Basic	<i>iMRS</i> PRIME Advanced	<i>iMRS</i> PRIME Expert	<i>iMRS</i> PRIME Hybrid	<i>iMRS</i> PRIME Trial
iMRS prime Control Unit	✓	✓	✓	✓	✓
iMRS prime Connectorbox	✓	✓	✓	✓	✓
Exagon Applicator Mat	✓	✓	✓	✗	✗
Exagon Applicator Pad	✓	✓	✓	✓	✓
Exagon Applicator Spot	✗	✓	✓	✓	✓
Exagon Applicator FIR	✗	✗	✗	✓	✓
20-PIN prime Connector Cable	✓	✓	✓	✓	✓
Software Tool Fast Start Programs	✓	✓	✓	✓	✓
Software Tool Manual Operation	✓	✓	✓	✓	✓
Software Tool Program Mode	✗	✓	✓	✓	✓
Software Tool Split Mode	✗	✗	✓	✓	✓
Software Tool iGUIDE	✗	✗	✓	✓	✓
Software Tool Hybrid Control	✗	✗	✗	✓	✓
Software Tool Frequency Generator	✗	✗	✗	✗	✓

Cotton Flex Cover Exagon MAT



Stretchable cotton flex cover for Exagon Applicator Mat. Removable & washable.

iMRS prime Organizer Bag Control Unit



Small bag for the control unit, power plug and other accessories.

Exagon Applicator Travel Bag



Travel bag for all Exagon Applicators (Exagon Mat/FIR, Exagon Pad, Exagon Spot).

iMRS prime Carefree plus 12 months



iMRS prime Warranty extension 12 months, including an unrestricted exchange program in the event of a technical defect within the selected Guarantee periods.

iMRS prime Carefree plus 24 months



iMRS prime Warranty extension 24 months, including an unrestricted exchange program in the event of a technical defect within the selected Guarantee periods.

Prime Full-Service Package

- ◆ An initial Onboarding-Call once the iMRS prime has been shipped and received by the customer, where a personal installation and activation session will be conducted via ZOOM with one of our trained Prime Tech!
- ◆ 12 months troubleshooting with the assigned Prime Tech via direct email access!
- ◆ Resolving technical issues within 48 hours!
- ◆ In case of the need to report a technical issue, the Prime Tech will create the Support Ticket for the customer!
- ◆ 12 months warranty extension for the iMRS prime system!

Swiss Bionic Solutions Schweiz GmbH

Schulhausstrasse 17 , 8834 Schindellegi, Switzerland
Phone: +41 (62) 295 5951 | Fax: +41 (62) 295 5952 | E-Mail: ch@swissbionic.com



Swiss Bionic Solutions Deutschland GmbH

Biberacher Str. 87 | 88339 Bad Waldsee, Germany
Phone: +49 (7524) 996 950 | Fax: +49 (7524) 996 9518 | E-Mail: de@swissbionic.com

Swiss Bionic Solutions USA Inc.

12330 SW 53rd Street | Suite 703 & 704 | Cooper City | Florida 33330, USA
Phone: +1 (954) 766 4153 | Fax: +1 (954) 766 4156 | E-Mail: us@swissbionic.com

Swiss Bionic Solutions Canada Inc.

195 North Service Rd W. Unit B8, Oakville, Ont. L6M 2W2, Canada
Phone: +1 (905) 465 0753 | Fax: +1 (1 866) 792 8182 | E-Mail: ca@swissbionic.com

Swiss Bionic Solutions Asia Ltd.

Unit B, 7/F. Office Plus @Mongkok, 998 Canton Road, Mongkok, Kowloon, Hong Kong
Phone: +852 2337-8774 | Mail: asia@swissbionic.com | E-Mail: asia@swissbionic.com



Advice and Guidance:



Disclaimer: iMRS prime and Omnium1 systems are listed, certified and approved medical devices within the scope of MDR 2017/745! The particular intent of use may differ from country to country due to non-harmonized standards, norms and regulations. Swissbionic Solutions Schweiz GmbH is a listed and certified manufacturer of medical devices within the scope of ISO 13485:2018 incl. MDSAP. All information provided in this brochure is for educational purposes only, and does not substitute for professional medical advice. Always consult a medical professional or healthcare provider if you're seeking medical advice, diagnoses, or treatment. iMRS prime including accessories are exclusively distributed by independent and certified LifeStyle Consultants trained by Swissbionic Solutions in accordance with the respective regulations. Swissbionic Solutions® and iMRS® are registered trademarks of Swissbionic Solutions Holding GmbH.